



This month we bring you;

- “WICKED” wrap up
- “MARY POPPINS” – on stage soon
- MTNZ Zone 3 Meeting
- Auditions – “Avenue Q”
- Social Function – Halloween Party
- Re-branding
- Information re “Les Miserables” auditions





Congratulations to everyone involved in this amazing production. This production was very well received in our community and a lot of feedback was received about how professional and enjoyable it was – and the following review supports the accolades received.

### ***WICKED's wow factor accompanied by eye-catching bling and proficient acting***

*The singers, the costumes, the sets. Oh my. WICKED's wow factor cannot be denied. This spectacular North Island premiere of the hit Broadway musical reaches new standards for locally produced big-budget shows. The set is of Royal New Zealand Ballet Company proportions, with costuming, lighting and effects to match.*

*Impressive sets and eye-catching bling are nothing though without proficient acting and vocal performances. Add an outstanding cast, with music maestro Barry Jones at the helm of a 17-piece orchestra, and appreciation for the scale and scope of this accomplishment magnifies.*

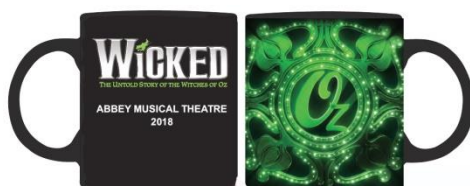
*WICKED is based on alternative facts – the re-imagined back story to L Frank Baum's 1900 fantasy, The Wizard of Oz. It reveals how self-obsessed glam-queen Galinda became Glinda the Good Witch, and how Elphaba, her thoughtful, caring, green-skinned college room-mate, became the Wicked Witch of the West. There are plenty of contemporary resonances to Elphaba's story. Her discovery, also made by Kermit the Frog that it's not easy being green, is related in an extended and extravagantly embellished flashback.*

*Professional performers Shaan Kloet as Elphaba and Ellie Neal as Galinda have great voices and the requisite acting talent. They provide this slightly too long and sometimes unwieldy 2003 Wizard of Oz reboot, with enough chemistry and character for its momentum. While Kloet and Neal admirably navigate the complicated score to deliver the lead vocal trills, they are supported magnificently by high-calibre local performers. Among them is Glen Nesbit, back in his hometown from the across-the-Tasman "Oz" to share his distinctive voice and presence as The Wizard. In the role of Prince Fivero Tigelaar, the romantic male lead who finds there is more to life than being a stereotype, Tyrell Beck continues to impress as singer and actor. Playing Madame Morrible, Joanne Sale shines as chancellor of the Hogwarts-esque Shiz University who becomes the Wizard's alt-facts spin-doctor responsible for the Wicked Witch "hag-tag" on Elphaba. Renee Evans is a revelation as Elphaba's younger wheelchair-confined sister Nessarose, while Bruce Sinclair as Dr Dillamond and Michael Doody as Boq also make quality contributions.*

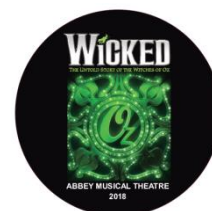
*(Richard Mays)*



**FOR SALE**



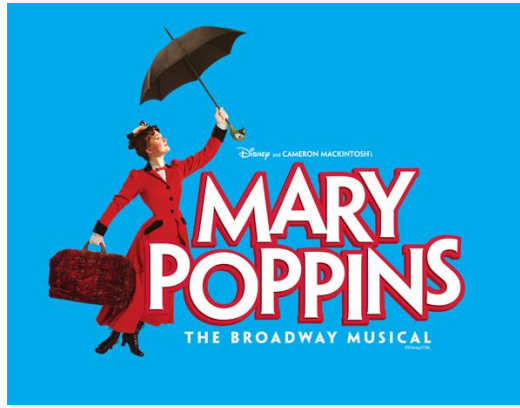
**Mugs - \$20.00 each**



**Mouse Pad - \$5.00 each**

If you would like to purchase either a "WICKED" coffee mug or "WICKED" mouse pad, please e-mail [aknagy@inspire.net.nz](mailto:aknagy@inspire.net.nz)





---

DIRECTOR  
**PHIL ANSTIS**

MUSICAL DIRECTOR  
**BARRY JONES**

CHOREOGRAPHER  
**MARIKA HARVEY**

---

ON STAGE AT THE  
WALLACE DEVELOPMENT COMPANY THEATRE, PALMERSTON NORTH

**22 NOVEMBER – 15 DECEMBER 2018**

---

**CAST LIST**

**MARY POPPINS**

**BERT**

**MR BANKS**

**MRS BANKS**

**MRS BRILL**

**ROBERTSON AY**

**JANE BANKS**

**MICHAEL BANKS**

**MISS ANDREW**

**MRS CORRY**

**ADMIRAL BOOM /**

**BANK CHAIRMAN**

**BIRD WOMAN**

Val Andrew

Tyrell Beck

Richard Brown

Renee Evans

Andrea Maxwell

Hayden Giles

Madeleine James / Ella Daynes

Matthew Lyne / Tom Brown

Jessie Feyen

Sophia Parker

Terry Stewart

Merryn Osborne

**ENSEMBLE**

Julie Cullen, Hannah Sandbrook, Peta Lynch, Hannah McDowall, Selena Ton, Isabella Jones, Hannah Mills, Taryn Baxter, Em Fawcett, Camden Woodroffe, Jake Maskill, Will Thompson, Kaea Rakatairi-Paul, Marie Jones, Tyler Purdy, Olly Dale, Neil Riddle, Sator'e Chambers

**BACKING VOCALISTS**

Andrea Cawood, Greg Dow, Jeff Paewai, Kevin Crawford, Sarah Donnelly, Shane Brown, Stephanie Franssen





Connecting communities creatively  
*Te huihuinga mai i ngā hapori wairua auaha*

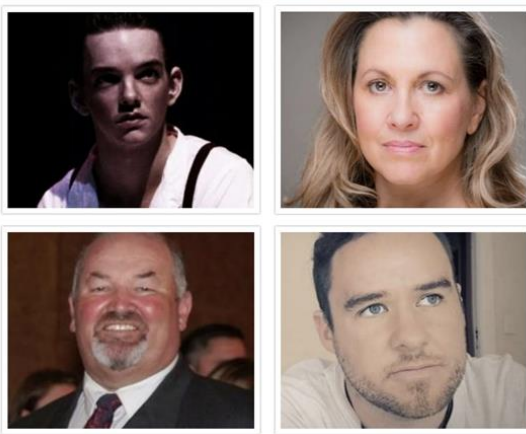
The MTNZ Zone 3 meeting is being held in Palmerston North at the Wallace Development Company Theatre (hosted by Abbey Musical Theatre) on Saturday, 29 September 2018, from 10.00 a.m.

Everyone is welcome to attend – this is a great opportunity for planning, workshops and networking, as well as catching up with our friends from our area. There will be a \$10 cost to cover morning tea and lunch (just bring it along on the day) and afterwards you are welcome to stay on for a bit of socialization – the bar will be open.

Please e-mail Sharron Pardoe (MTNZ Zone 3 Representative) [zone3@mtnz.co.nz](mailto:zone3@mtnz.co.nz) to confirm your attendance by Wednesday, 26 September 2018, for catering.

Here's our awesome line-up of presenters;

- Singer/songwriter/musician/director Elijah Graham
- Singer, director, choreographer and director Julie O'Brien
- Allan Nagy, production and techie maestro
- MTNZ's NextGen rep James Wright - singer, director, choreographer and member of Napier Operatic Society executive.



Discussions/workshops at the meeting include;

### **Knowledge Cafe**

#### **MTNZ – Into the future strategic planning workshop; the next five years**

In 2015, the national body went “on the road” to talk to our members about what they really wanted from the national body. Our strategic plan was ratified and is still a living document that guides the MTNZ Executive in all aspects of the organisation – operationally, culturally, board meetings, AGM, reporting and today is all about you as individuals having your say and input in defining the future direction of MTNZ at a national level – the next five years. Community theatre is enjoying a period of revival, with higher audience attendances across the board and higher numbers of aspiring performers wanting to be a part of the action. However, most of us struggle to balance the books each year and see fewer people wanting to volunteer for the less glam roles backstage or worse still sitting on a committee. So we want to hear from you, what do you think a national body can do to help and support your organisation and community over the next five years.

### **Auditions, Lifting Your Game – Julie O'Brien**

In this workshop Julie will look at how performers can do their best audition and how directors can get the best out of auditionees.

### **Stage Management/Production – Allan Nagy**

Allan has just emerged from a very successful season of "WICKED" at the Regent on Broadway where he was both the Production Manager and the Stage Manager. In this forum, bring all your techie questions (no matter how trivial they may seem) and Allan will host a frank discussion.

### **Our Young Directors – James Wright & Elijah Graham**

James and Elijah will host a discussion on how young performers/musicians can move into directing, becoming an MD for their societies, or become involved in their committees/boards.



# **AUDITIONS AUDITIONS AUDITIONS**



Winner of the Tony "Triple Crown" for Best Musical, Best Score and Best Book, *Avenue Q* is part flesh, part felt and packed with heart. The laugh-out-loud musical tells the timeless story of a recent college grad puppet named Princeton, who moves into a shabby New York apartment all the way out on Avenue Q. He soon discovers that, although the residents seem nice, it's clear that this is not your ordinary neighbourhood. Together, Princeton and his new-found friends struggle to find jobs, dates and their ever-elusive purpose in life.

---

#### **DIRECTOR**

PHIL ANSTIS

#### **MUSICAL DIRECTOR**

SHANE BROWN

---

**ON STAGE AT THE WALLACE DEVELOPMENT COMPANY THEATRE, PALMERSTON NORTH  
28 MARCH – 13 APRIL 2019**

---

#### **AUDITIONS**

**Saturday – 1 December 2018**

(at the Wallace Development Company Theatre, Centennial Drive, Palmerston North)

**From 10.00 a.m.**

---

**For further information or to book an audition time, please e-mail Renee Evans (Production Secretary)**

**E: [avenueqpalmy@outlook.co.nz](mailto:avenueqpalmy@outlook.co.nz)**

# ROLES AVAILABLE

<p><b><u>PRINCETON</u></b></p> <p>A fresh-faced kid just out of college and the protagonist. Puppet.</p> <ul style="list-style-type: none"> <li>• Male</li> <li>• Stage age: 20-25</li> <li>• Vocal range: Bb2 – G4</li> </ul>	<p><b><u>KATE MONSTER</u></b></p> <p>A Kindergarten teaching assistant, who is a bit older than Princeton. Puppet.</p> <ul style="list-style-type: none"> <li>• Female</li> <li>• Stage age: 25 – 30</li> <li>• Vocal range: F#3 – F5</li> </ul>
<p><b><u>NICKY</u></b></p> <p>A slacker who lives with Rod. Puppet.</p> <ul style="list-style-type: none"> <li>• Male</li> <li>• Stage Age: 20- 30</li> <li>• Vocal range: B2 – B4</li> </ul>	<p><b><u>ROD</u></b></p> <p>An investment banker who is Republican and a closeted homosexual. Puppet.</p> <ul style="list-style-type: none"> <li>• Male</li> <li>• Stage age: 25 – 30</li> <li>• Vocal range: A2 – G4</li> </ul>
<p><b><u>TREKKIE MONSTER</u></b></p> <p>A reclusive creature obsessed with the Internet and all it has to offer. Puppet.</p> <ul style="list-style-type: none"> <li>• Male</li> <li>• Stage age: 30 – 40</li> <li>• Vocal range: Bb2 – Eb4</li> </ul>	<p><b><u>LUCY</u></b></p> <p>A vixenish vamp with a dangerous edge. Puppet.</p> <ul style="list-style-type: none"> <li>• Female</li> <li>• Stage Age: 25 – 30</li> <li>• Vocal range: F3 - F5</li> </ul>
<p><b><u>THE BAD IDEA BEARS</u></b></p> <p>Two snuggly, cute teddy-bear types. Puppets.</p> <ul style="list-style-type: none"> <li>• Female</li> <li>• Stage age: 20 – 40</li> <li>• Vocal range: Bb3 – G4</li> </ul>	<p><b><u>MRS T</u></b></p> <p>Crabby and ancient. Kate’s boss. Puppet.</p> <ul style="list-style-type: none"> <li>• Female</li> <li>• Stage age: 50 – 65</li> </ul>
<p><b><u>BRIAN</u></b></p> <p>A laid-back guy married to Christmas Eve. Human.</p> <ul style="list-style-type: none"> <li>• Male</li> <li>• Stage age: 30 – 45</li> <li>• Vocal range: B2 – F#</li> </ul>	<p><b><u>CHRISTMAS EVE</u></b></p> <p>A therapist who recently moved to Avenue Q from Japan. Human.</p> <ul style="list-style-type: none"> <li>• Female</li> <li>• Stage age: 30 – 45</li> <li>• Vocal range: B3 – F#5</li> </ul>
<p><b><u>GARY COLEMAN</u></b></p> <p>Yes, that Gary Coleman. Lives on the Avenue and is the superintendent of the apartment buildings.</p> <ul style="list-style-type: none"> <li>• Female</li> <li>• Stage age: 30 – 40</li> <li>• Vocal range: D3 – Bb5</li> </ul>	

# GENERAL INFORMATION

- All auditionees must complete an AMT audition form
- Audition forms can be accessed from AMT's website – [www.abbeymusicaltheatre.co.nz](http://www.abbeymusicaltheatre.co.nz) on the 'auditions' page.
- On your audition form you are required to show your vocal range. Not only should you put 'Tenor' or 'Baritone' (for example), but you will also need to indicate what your bottom and top notes are.
- 'Avenue Q' will be on stage in the Wallace Development Company Theatre, Centennial Drive, Palmerston North, from **28 March – 13 April 2018**.

## THINGS YOU NEED TO KNOW

- Diversity is encouraged and all ethnic groups are welcome to audition.
- All roles are open to audition.
- Auditions will be held in intervals of 10 minutes each.
- Singing auditions will be 'individual' auditions.
- Please arrive for your audition a minimum of 20 minutes prior to your booking for administration and allow yourself adequate time for personal preparation.
- Auditions will be held Saturday and Sunday, **1 & 2 December 2018** at the **Wallace Development Company Theatre**, Centennial Drive, Palmerston North.

## AUDITION BOOKING INFORMATION

- To audition for '**AVENUE Q**' you must register and book an audition time prior to Friday, 30 November 2018, with:

**Renee Evans, Production Secretary – 'Avenue Q'**

**E:** [avenueqpalmy@outlook.co.nz](mailto:avenueqpalmy@outlook.co.nz)

**M:** 027 699 6991

- You need to put everything you've got into your audition. We want you to be able to relax on the day and enjoy learning from the audition experience. We do, however, want you to be prepared – it shows us that you've put some thought and commitment into this.

## Principal (Soloist) Role Auditions

- Principal (Soloist) role singing auditions will be in intervals of 10 minutes each.
- Your audition song must be one that that particular character sings in the show.
- If you bring sheet music, please ensure it is in the right key – there will be an accompanist provided.
- A cord will be available for all backing tracks on smart devices.
- Principal (Soloist) auditionees should be aware of their character's songs from the show and have done their homework on them.
- All auditionees should bring a recent picture with them to accompany their audition form.

## REHEARSALS

- **You must be prepared to commit to rehearsals and the performance dates.** If for any reason, you may not be able to attend any of the rehearsals, you must detail this on your audition form and this will be considered in the audition process. Any non-attendance at rehearsals will not be tolerated unless approved prior to the rehearsal season beginning. Rehearsal start date is TBC.

## Important:

Your participation in this production requires a huge commitment in both time and professionalism in order to ensure a production of the highest possible quality. Therefore, please do not audition if you are not in a position to commit fully to the rehearsal schedule. While talent is the primary consideration when casting, level of commitment will also be a consideration and final choices for principal and ensemble roles will be made with this in mind. All roles available are on an unpaid basis.

### **PERFORMANCE DATES**

Thursday	28 March 2019	7.30 p.m.	Opening Night
Friday	29 March 2019	7.30 p.m.	
Saturday	30 March 2019	7.30 p.m.	
Thursday	4 April 2019	7.30 p.m.	
Friday	5 April 2019	7.30 p.m.	
Saturday	6 April 2019	7.30 p.m.	
Thursday	11 April 2019	7.30 p.m.	
Friday	12 April 2019	7.30 p.m.	
Saturday	13 April 2019	7.30 p.m.	Final Night

*(Total = 9 Performances)*



## **Palmerston North Operatic Society**

### **Re-Branding Feedback**

Abbey Musical Theatre needs a “refresh” and an update of our theatre brand to reflect who and where we are now.

In this ever-changing world we too have evolved since we first started out over 100 years ago. With different locations we want to be recognised as our society and not the location we may not occupy in 50 years' time. Since moving to our new venue there has been some feeling that we have lost our identity. With this our new venue not really feeling like a new home, there has been some confusion from the public with who we are. It's also difficult not being as centrally located as we were and initially being referred to as "The Auditorium" and, in more recent times, "The Wallace Development Company Theatre".

Abbey Musical Theatre was associated with the Church Street building for so long, especially with the public, so there is a decision to be made around making our society about who we are, not where we are. This enables us to be known by the great quality theatre and people from the past, present and future that are attached to the society, not by the venue we are currently occupying.

We would like your input on the questions in the survey below so we can together create a new brand and continue to be proud of who we are as a society.

If you complete the survey in the link below by 1 November 2018, you will go into the draw to win a double pass to “MARY POPPINS”.

[https://docs.google.com/forms/d/e/1FAIpQLSdEtXSMdo\\_I21E8Dun4fI7uhvJDA6mrWBXJ2r-DUC10\\_WB6A/viewform?usp=sf\\_link](https://docs.google.com/forms/d/e/1FAIpQLSdEtXSMdo_I21E8Dun4fI7uhvJDA6mrWBXJ2r-DUC10_WB6A/viewform?usp=sf_link)







**You have been invited to**

# **AMT's Halloween Party**

**27 October 2018 at 7 p.m.**

**at the café behind the Wallace Development Company Theatre**

**Ticket price – \$19.99**

**[http://sa2.seatadvisor.com/sabo/servlets/TicketRequest?&presenter=NZABBEY  
&event=HPARTY](http://sa2.seatadvisor.com/sabo/servlets/TicketRequest?&presenter=NZABBEY&event=HPARTY)**

**Online sales only**

**Strictly R18 event only**

**BYOB**

**Food and entertainment to be provided**

**Prize for best dressed**

**Plus ones are welcome**

**Dressing up is optional but is preferred**





**AUDITIONS TO BE HELD**

9 & 10 MARCH 2019

**REGISTRATIONS FOR AUDITIONS OPEN**

7 JANUARY 2019

**ON STAGE AT THE REGENT ON BROADWAY**

9 – 24 AUGUST 2019

**DIRECTOR/MUSICAL DIRECTOR**

BARRY JONES

**ASSISTANT DIRECTOR/MUSICAL DIRECTOR**

ANDREA MAXWELL

**TICKETS ON SALE FROM**

MARCH 2019

**PERFORMANCE DAYS**

Friday – 9 August 2019

Saturday – 10 August 2019

Sunday – 11 August 2019 (4.00 p.m. matinee)

Wednesday – 14 August 2019

Thursday – 15 August 2019

Friday – 16 August 2019

Saturday – 17 August 2019

Sunday – 18 August 2019 (4.00 p.m. matinee)

Wednesday – 21 August 2019

Thursday – 22 August 2019

Friday – 23 August 2019

Saturday – 24 August 2019

## SYNOPSIS

One of the world's most iconic and longest-running musicals, *Les Misérables* tells the story of Jean Valjean, a former convict who spends a lifetime seeking redemption. Set against the backdrop of 19th-century France and the aftermath of the French Revolution, this timeless story of intertwined destinies reveals the power of compassion and the quiet evil of indifference to human suffering. As Valjean's quest for a new life carries him into Paris and to the barricades of the Student Revolution, he is hunted by Inspector Javert and the ghosts of his past. Amidst a battle for the soul of Paris, he discovers the true meaning of love and salvation.

Performed in over 40 countries and 22 languages and with a lush, swelling score that features such famed songs as "I Dreamed a Dream," "On My Own," and "Bring Him Home," *Les Misérables* brings Victor Hugo's revolutionary novel blazingly to life.

Experience the theatrical sensation!

## ROLES AVAILABLE

Roles available in this production will be itemised in the November 2018 "Stage Rage".

